

58/172

172

A PART OF P.U.D.

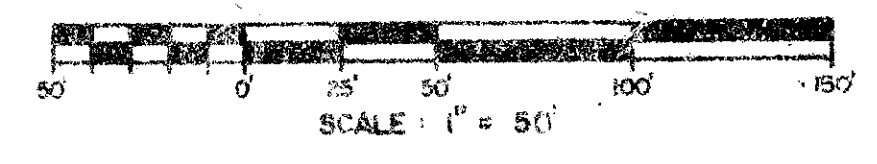
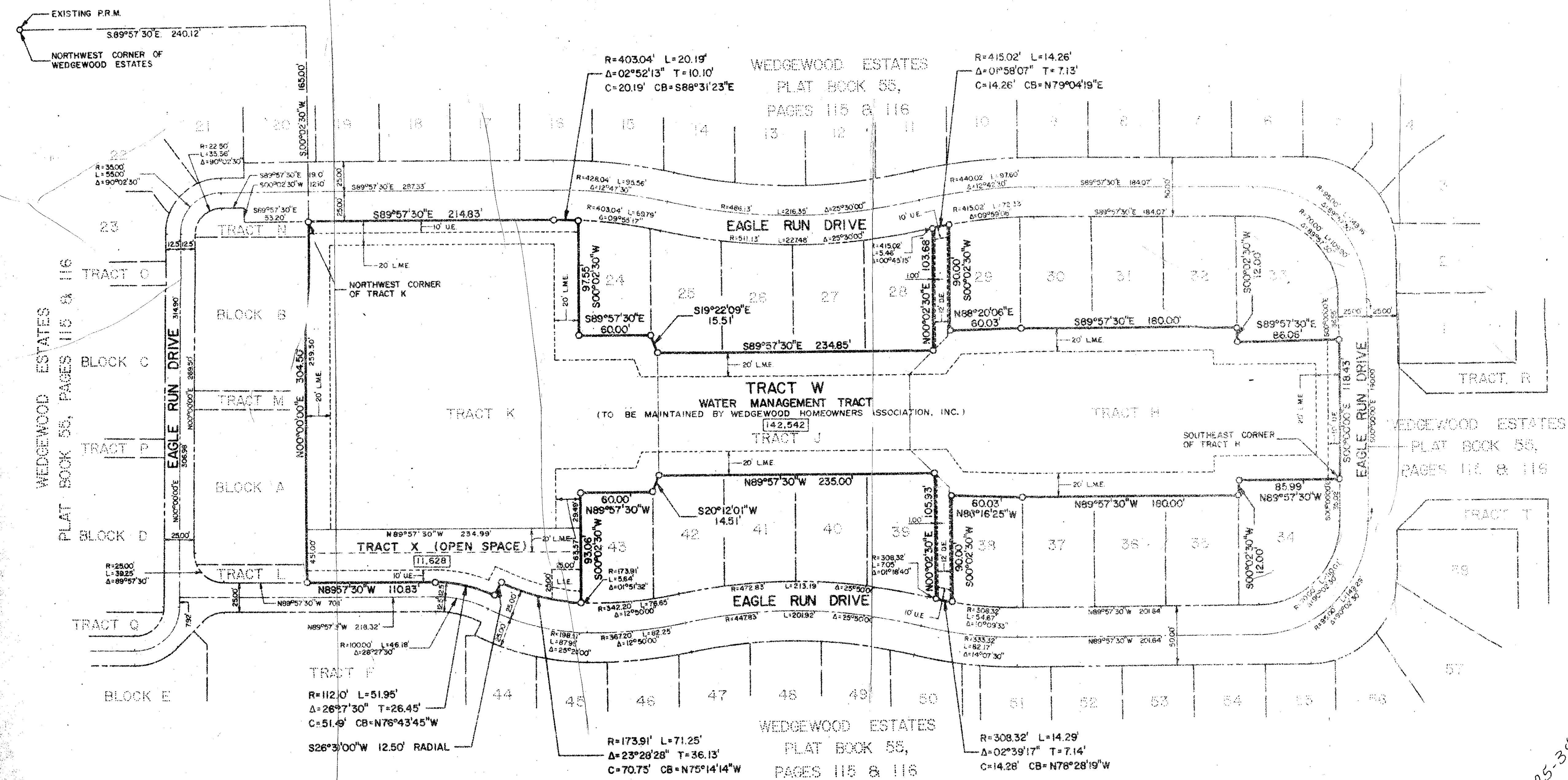
REPLAT - TRACTS H, K & J - WEDGEWOOD ESTATES

BEING A REPLAT OF TRACTS H, K & J, WEDGEWOOD ESTATES, AS RECORDED IN PLAT BOOK 55, PAGES 115 & 116 OF THE PUBLIC RECORDS OF PALM BEACH COUNTY, FLORIDA ALSO BEING A PORTION OF SECTION 17, TOWNSHIP 47 SOUTH, RANGE 42 EAST, PALM BEACH COUNTY, FLORIDA

JOHN A. GRANT, JR., INC. CONSULTING ENGINEERS AND LAND SURVEYORS BOCA RATON, FLORIDA

APRIL 1987

SHEET 2 OF 2



NOTES

Bearings shown hereon are based on the plat of WEDGEWOOD ESTATES, as recorded in Plat 55, Pages 115 & 116 of Public Records of Palm Beach County, Florida.

No buildings or any kind of construction shall be placed on utility or drainage easements.

No structures, trees or shrubs shall be placed on drainage easements or lake maintenance easements.

Approval of landscaping on utility easements, other than water and sewer shall be only with the approval of all utilities occupying same.

O P.R.M. Indicates Permanent Reference Monument.
 U.E. Indicates Utility Easement.
 D.E. Indicates Drainage Easement.
 L.M.E. Indicates Lake Maintenance Easement.
 L.S.E. Indicates Lift Station Easement.

NOTICE: There may be additional restrictions that are not recorded on this plat that may be found in the public records of this county.

This instrument was prepared by:
 John A. Grant, Jr., John A. Grant, Jr., Inc.
 5355 North Federal Highway, Boca Raton, Florida 33461.

SECTION 17, TOWNSHIP 47 SOUTH, RANGE 42 EAST, PALM BEACH COUNTY, FLORIDA

PLAT BOOK 55, PAGES 115 & 116

FLOOD HAZARD ZONING

ZIP CODE

NAME

Ret-85-34

0504-001

58/172

REPLAT-TRACTS H, K & J - WEDGEWOOD ESTATES